



VELOGAINE

BAROSSA VALLEY

SATURDAY APRIL 8

2 & 4 hour Cycle Rogaine

Map Scale 1:50,000 (grid 1km square)

Contour interval 10 metres

Green Line = Kidman & Lavender Trails

Disregard blue / purple lines

2 pink lines = banned track

Total controls - 25

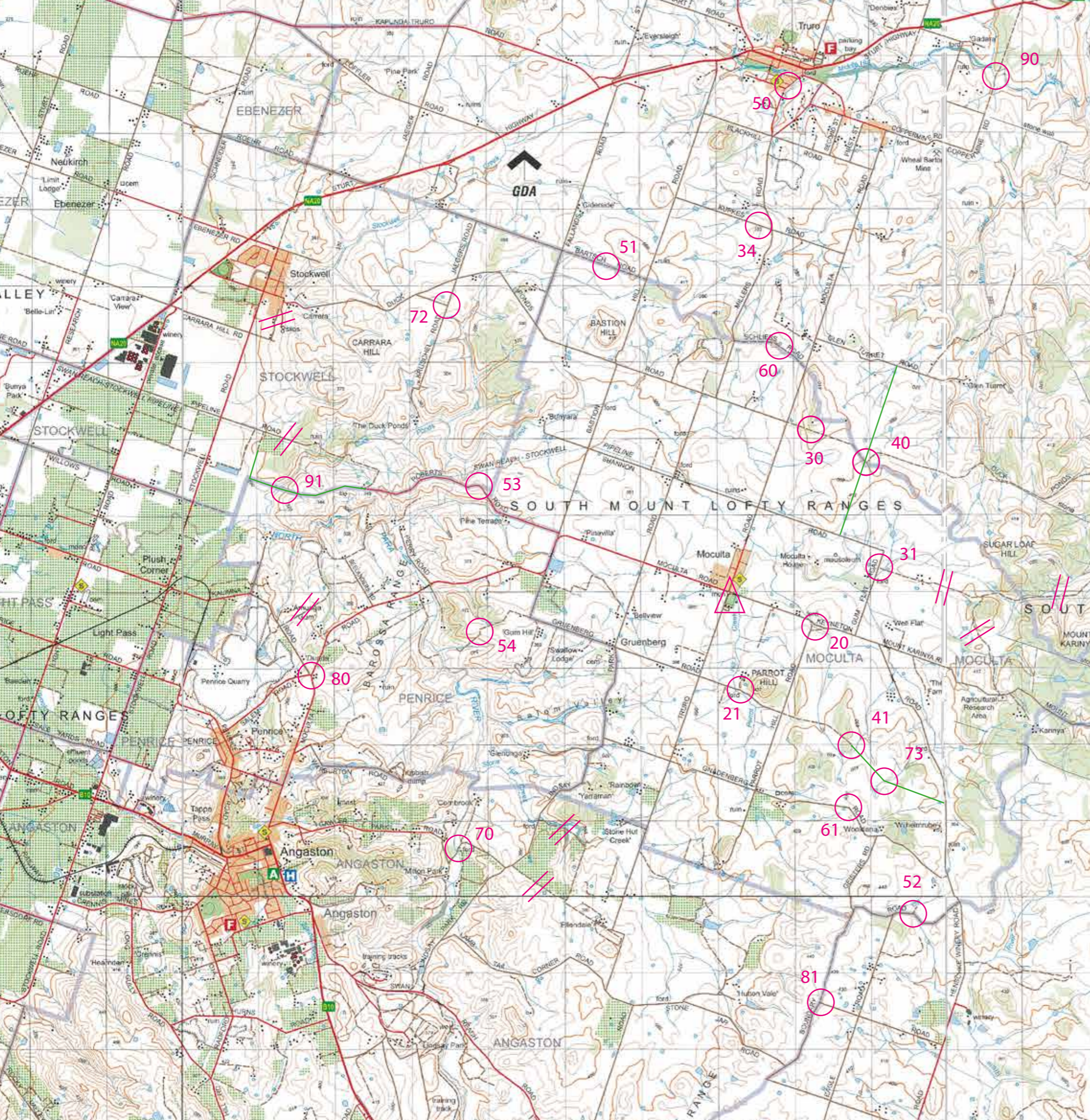
Total points - 1370



North

Emergency contact numbers

0428 649 959 or 0419 031 407



VELOGAINE
BAROSSA VALLEY
SATURDAY APRIL 8


2 & 4 hour Cycle Rogaine


Map Scale 1:50,000 (grid 1km square)
Contour interval 10 metres
Green Line = Kidman & Lavender Trails
Disregard blue / purple lines
2 pink lines = banned track


Total controls - 25
Total points - 1370

Emergency contact numbers
0428 649 959 or 0419 031 407

Proudly Supported by

 **SOUTH AUSTRALIAN ROGAING ASSOCIATION**
AN ADVENTURE STRATEGY SPORT

OUR OFFICIAL PARTNER
 **I/O Merino**
NATURAL ACTIVE APPAREL

 **sn@p**
Snap Hilton
(08) 8234 6166

E admin@sa.rogaining.com.au
W sa.rogaining.com.au

TRURO
PRIMARY SCHOOL